

*Excellence in  
product quality  
and service*

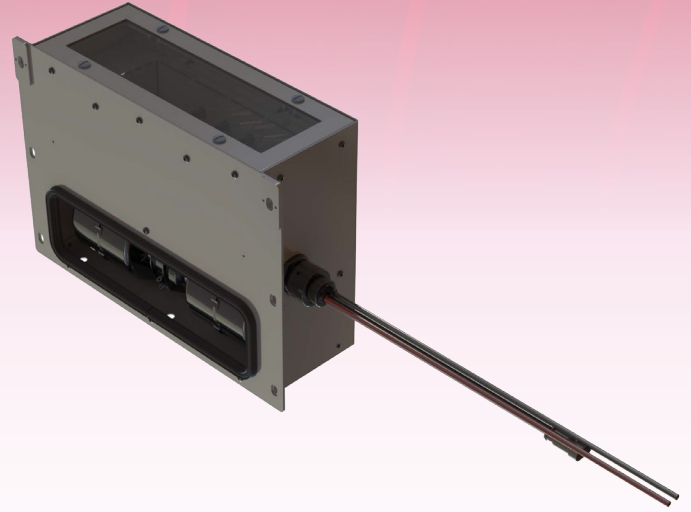
# Electric Demister

## System overview

Grayson's Electric Demisters are designed to fit easily in the driver's cabin and can be modified to suit individual requirements. Keeping the driver warm and comfortable is paramount in keeping the vehicle on the road.

## Features & Benefits

- All electric heat source
- Instant heat
- Lightweight construction delivering either 750W or 1250W of heat from a 24V DC power source
- Safety thermal protection as standard
- Two blower speeds
- 30 minute active timer on the heating elements
- Driver can tailor the airflow to their requirements
- Perfect to install as a retrofit compact design
- All boxes are 24V DC as standard
- Full electric which removes the requirement for additional water piping
- Ideal as either a windscreen demister or as a small boost for driver comfort



## CONTACT US



### GRAYSON THERMAL SYSTEMS UK

Wharfdale House  
257 Wharfdale Road  
Tyseley, Birmingham  
B11 2DP

**t** +44 (0)121 700 5600  
**e** [sales@graysonts.com](mailto:sales@graysonts.com)  
**w** [graysonts.com](http://graysonts.com)

### GRAYSON KINGPIN

Unit 4, Kingpin Industrial Park  
Tyseley Wharf,  
Off Wharfdale Road,  
Birmingham B11 2FE  
United Kingdom

**t** +44 (0)121 700 5600  
**e** [sales@graysonts.com](mailto:sales@graysonts.com)

### GRAYSON CORP USA

980 Hurricane Road  
Franklin, Indiana  
IN 46131

**t** +1 (317) 739-3290  
**e** [sales-northamerica@graysonts.com](mailto:sales-northamerica@graysonts.com)

*Excellence in  
product quality  
and service*

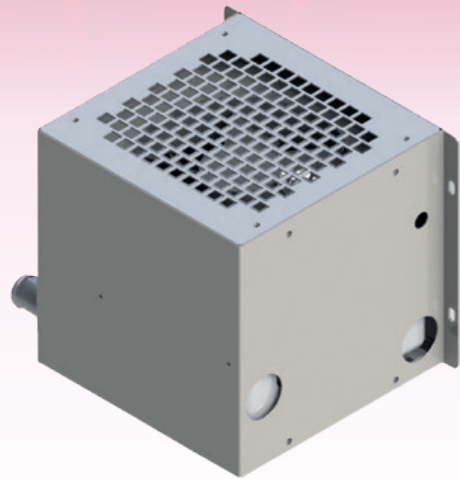
# Cab Heater Boxes

## System overview

Grayson's Cab Heaters are designed to fit easily in the driver's cabin and can be modified to suit individual requirements. Keeping the driver warm and comfortable is paramount in keeping the vehicle on the road.

## Features & Benefits

- All boxes are 24V DC as standard
- Perfect boost to give the driver additional heat
- Ideal to prevent ice build up at vehicle entrance in extreme cold climates
- Lightweight construction delivering either 750W or 1250W of heat from a 24V DC power source
- Bespoke to fit exact requirements
- Prevents need for full redesign of cab heater for vehicle sales in low ambient conditions



## CONTACT US



### GRAYSON THERMAL SYSTEMS UK

Wharfdale House  
257 Wharfdale Road  
Tyseley, Birmingham  
B11 2DP

**t** +44 (0)121 700 5600  
**e** [sales@graysonts.com](mailto:sales@graysonts.com)  
**w** [graysonts.com](http://graysonts.com)

### GRAYSON KINGPIN

Unit 4, Kingpin Industrial Park  
Tyseley Wharf,  
Off Wharfdale Road,  
Birmingham B11 2FE  
United Kingdom

**t** +44 (0)121 700 5600  
**e** [sales@graysonts.com](mailto:sales@graysonts.com)

### GRAYSON CORP USA

980 Hurricane Road  
Franklin, Indiana  
IN 46131

**t** +1 (317) 739-3290  
**e** [sales-northamerica@graysonts.com](mailto:sales-northamerica@graysonts.com)