

# Stroco

Diesel Water Heater



Faster engine  
warm up time



Quieter  
operation



Minimal  
maintenance

---

Creating the future of  
thermal management

---



**Grayson**  
THERMAL SYSTEMS

**Excellence in  
product quality  
and service**

# Stroco

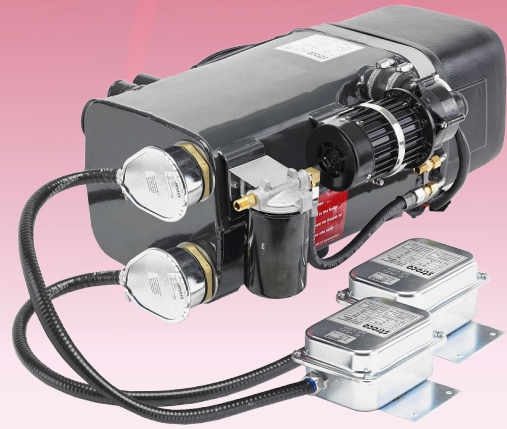
## Diesel Water Heater

### System overview

The Diesel Water Heater is an effective heater with a stainless steel combustion chamber and automatic engine regulation. The heater is made from 100% licensed components and is delivered complete with a built in 220V central heating pump.

The central heating pump is mounted directly on the boiler, entailing that the installation only requires 2 water connections.

The heater is fitted with a complete electronic security system such as flame supervision by means of a photo electric sensor and over-temperature safeguard, which



re-establishes the contact through applying light pressure. The Diesel Water Heater is approved for combustion of diesel, bio-diesel, ethanol, and RME.

*The electric unit is delivered as an AC, DC, or combination model.*

### Features & Benefits

- 8-10% saving of energy
- Eco-friendly solution - reduced consumption of fossil fuels
- Electronic error indication and engine regulation - Cleaner combustion
- Easy fitting - just one unit
- Lower lifetime costs
- Simple diagnostic system
- Only combination heater for buses in one complete unit

### TECHNICAL DATA

|  |   |
|--|---|
| Heating Output: <b>23kW/30kW</b>               | Operating Voltage (Electricity): <b>672 VDC/400 VAC</b>   |
| Heating Output (Electricity): <b>8 or 16kW</b> | Regulation: <b>Between 2.6 and 16kW in steps of 2.6kW</b> |
| Efficiency: Approx. <b>87%</b>                 | Length: <b>570mm</b>                                      |
| Central Heating Pump: <b>5400 litres</b>       | Width: <b>245mm</b>                                       |
| Fuel Consumption: <b>2.66 kg/hour</b>          | Height: <b>234mm</b>                                      |
| Operating Voltage: <b>12 / 24v</b>             | Weight: <b>30kg incl. water pump</b>                      |

We are here to help! Contact us for assistance...



**t** +44 (0)121 700 5600 **f** +44 (0)121 700 5601

**e** sales@graysonts.com **w** graysonts.com

Wharfdale House, 257 Wharfdale Road, Tyseley,  
Birmingham B11 2DP, UK

Follow us on social media:



@GraysonTS



grayson-thermal-systems

**GRAYSON CORP USA**

**t** +1 (317) 739-3290

**e** sales-northamerica@graysonts.com

980 Hurricane Road, Franklin, Indiana,  
IN 46131, USA