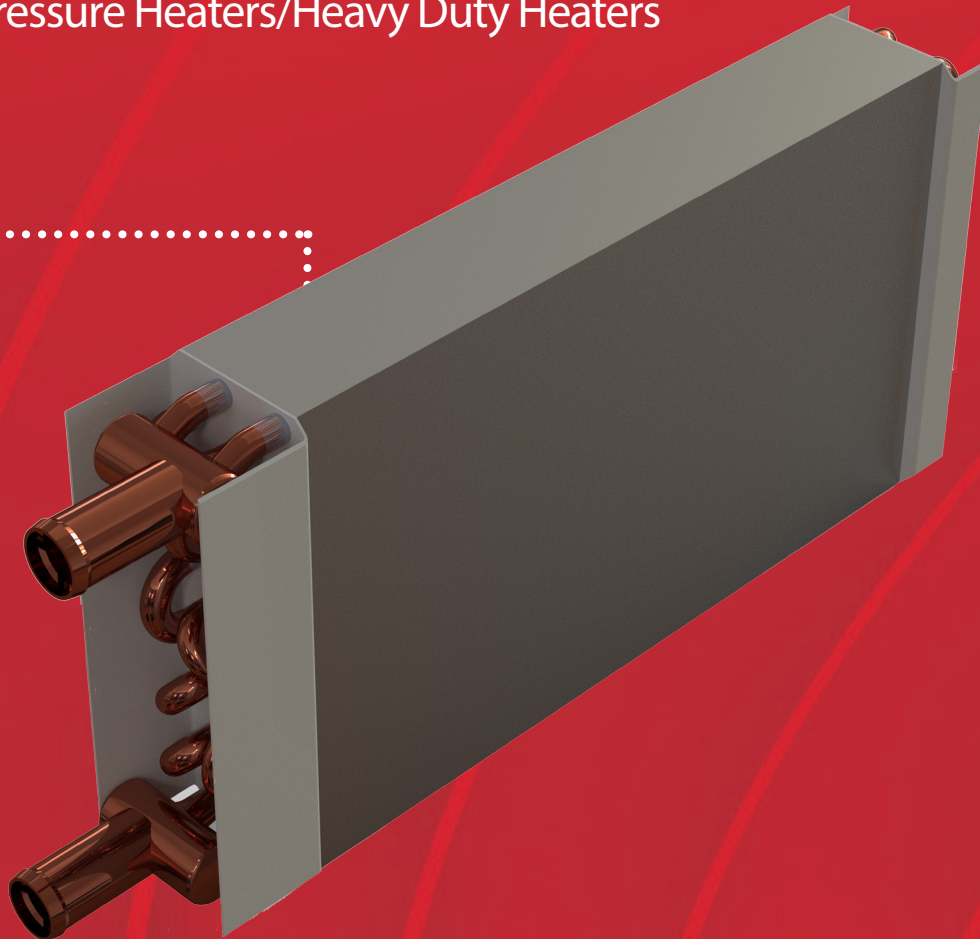


# Heaters Built to Last...

High Pressure Heaters/Heavy Duty Heaters



Proven  
technology



Supported  
with exceptional  
service



Save on  
maintenance  
costs

Creating the future of  
thermal management



**Grayson**  
THERMAL SYSTEMS

**Excellence in  
product quality  
and service**

# Heaters Built to Last...

## System Overview

The heaters are manufactured out of aluminium, which allows the unit to cope with higher pressures. The full heater spec can be found below.



Supported with exceptional service



Save on maintenance costs

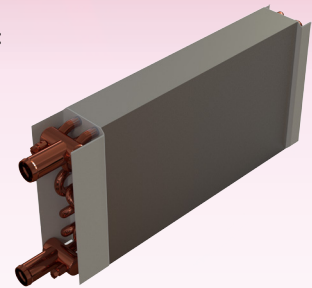


Proven technology

| TYPE                                     | PART NUMBER  | SIZES                               | HEAT OUTPUT | DRY WEIGHT | MAX WORKING PRESSURE |
|--|--|-------------------------------------|-------------|------------|----------------------|
| High Pressure Heaters<br>(With bleed)    | HP-2412-009  | H: 175mm<br>W: 400mm<br>D: 61.5mm   | 13kW        | 1.76Kg     | 8 bar                |
|  | HP-2412-019  | H: 175mm<br>W: 410mm<br>D: 61.5mm   | 13kW        | 1.76Kg     | 8 bar                |
|  | HP-2412-029  | H: 175mm<br>W: 400mm<br>D: 50mm     | 13kW        | 1.76Kg     | 8 bar                |
|  | HP-2412-109  | H: 175mm<br>W: 483mm<br>D: 61.5mm   | 18kW        | 1.96Kg     | 8 bar                |
| High Pressure Heaters<br>(Without bleed) | HP-2412-005  | H: 175mm<br>W: 400mm<br>D: 61.5mm   | 13kW        | 1.76Kg     | 8 bar                |
|  | HP-2412-015  | H: 175mm<br>W: 410mm<br>D: 61.5mm   | 13kW        | 1.76Kg     | 8 bar                |
|  | HP-2412-025  | H: 175mm<br>W: 400mm<br>D: 61.5mm   | 13kW        | 1.76Kg     | 8 bar                |
|  | HP-2412-105  | H: 175mm<br>W: 483mm<br>D: 61.5mm   | 18kW        | 1.96Kg     | 8 bar                |
| Aluminium Heaters                        | HP-3930-000  | H: 162.5mm<br>W: 400mm<br>D: 61.5mm | 13kW        | 1.45Kg     | 1.5 bar              |
|  | HP-3930-010  | H: 162.5mm<br>W: 410mm<br>D: 61.5mm | 13kW        | 1.45Kg     | 1.5 bar              |
|  | HP-3930-020  | H: 162.5mm<br>W: 400mm<br>D: 61.5mm | 13kW        | 1.46Kg     | 1.5 bar              |
|  | HP-3930-100  | H: 162.5mm<br>W: 483mm<br>D: 61.5mm | 18kW        | 1.74Kg     | 1.5 bar              |
| High Pressure Heater Kits                | HP-2630-777<br><small>Includes (HP-2412-019)</small> | H: 175mm<br>W: 410mm<br>D: 61.5mm   | 13kW        | 1.9Kg      | 8 bar                |
|  | HP-2640-777<br><small>Includes (HP-2412-019)</small> | H: 175mm<br>W: 410mm<br>D: 61.5mm   | 13kW        | 1.9Kg      | 8 bar                |
|  | HP-2659-777<br><small>Includes (HP-2412-009)</small> | H: 175mm<br>W: 400mm<br>D: 61.5mm   | 13kW        | 1.9Kg      | 8 bar                |

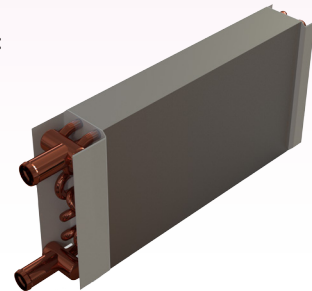
Model Example:  
**HP-2412-009**

Dimensions:  
**H: 175mm**  
**W: 400mm**  
**D: 61.5mm**



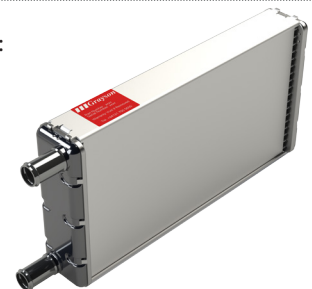
Model Example:  
**HP-2412-005**

Dimensions:  
**H: 175mm**  
**W: 400mm**  
**D: 61.5mm**



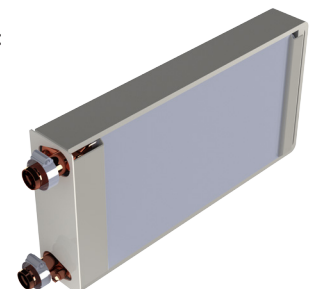
Model Example:  
**HP-3930-000**

Dimensions:  
**H: 162.5mm**  
**W: 400mm**  
**D: 61.5mm**



Model Example:  
**HP-2659-777**

Dimensions:  
**H: 175mm**  
**W: 400mm**  
**D: 61.5mm**



**We are here to help! Contact us for assistance...**



**+44 (0)121 700 5600**

**+44 (0)121 700 5601**

**sales@graysonts.com**

**graysonts.com**

Follow us on social media:



**@GraysonTS**



**grayson-thermal-systems**

Wharfdale House, 257 Wharfdale Road, Tyseley, Birmingham B11 2DP